

**Panasonic**

# MAKE ART

We give hair stylists the tools  
to express themselves,  
to go beyond cutting hair,  
and to truly Make Art.



Professional Hair Clipper



# THE NEVER-ENDING CANVAS

Hair is your never-ending canvas.  
It's full of possibilities.

And you're free to do anything  
you can imagine with it.

That's why we're redefining clippers.  
So you can redefine what's possible.

Sharpen your shape.  
Define your line.  
Express yourself.

Make Art.



Survey conducted by



Panasonic's hair trimmers and clippers have the No. 1 usage rate among professionals at hairdressers and barber shops in Germany, France and Italy.

Source: Euromonitor International Ltd. Defined as brands used in a sample of 100 hairdressers and barber shops per country. Survey conducted September-October 2022.



## Panasonic's Longest Run Time, 150 min<sup>\*1</sup>

The combination of new battery system and the ultra-fast linear motor 2.0 enables high-power cutting for three-times longer than conventional models.\*2



You can use it without concerns about battery power to focus on the cut, improving your own performance and communication with clients. This clipper features a lightweight, small yet higher capacity lithium-ion battery. There is less capacity loss than a Ni-MH battery due to repeated use.

<sup>\*1</sup> ER-HGP90 only  
Based on dry using at 20-30°C

<sup>\*2</sup> In comparison with Panasonic model ER-HGP84



## CONSTANT CONTROL

With Constant Control, Panasonic's ultra-fast linear motor, which offers exclusive high speed provides even smoother cutting with less stress than ever before.



### ULTRA-FAST LINEAR MOTOR 2.0<sup>\*1</sup> FOR MORE POWERFUL CUTTING

Panasonic's state-of-the-art ultra-fast linear motor 2.0 enables you to experience finer finishing with one pass\*2 by sustaining speed, even when hair is dense. Mag-lev technology cuts at 10,000\*3 strokes per minute for powerful and smoothing cutting.

<sup>\*1</sup> For ER-HGP90 only. ER-HGP86, ER-HGP84, ER-GP84-N, ER-HGP74, ER-HGP65, ER-SP20 are Ultra-fast linear motor.

<sup>\*2</sup> For ER-HGP90 only. In comparison with Panasonic model ER-HGP84

<sup>\*3</sup> For ER-HGP90, ER-HGP86, ER-HGP84, ER-GP84-N, ER-HGP74, ER-HGP65. ER-SP20 is providing 13,000 strokes per minute.



### MAINTAINS SMOOTH, STEADY CUTTING EVEN WITH DENSE HAIR\*

With conventional hair clippers, the range of blade movement decreases when cutting areas of dense hair, resulting in reduced cutting performance. Thanks to constant control, the power and blade movement of Panasonic hair clippers are maintained for maximum performance and smooth cutting even of dense areas of hair.

<sup>\*</sup>For ER-HGP90, ER-HGP84, ER-GP84-N, ER-HGP74, ER-HGP65 only

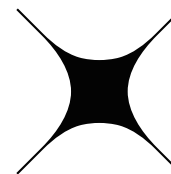


### CONSTANT CONTROL FOR CONSTANT BLADE MOVEMENT\*

An advanced sensor detects the density of hair and automatically controls the power of the motor to maintain constant blade movement. Unlike conventional clippers, blade speed doesn't decrease. As a result, the blades don't become clogged with hair, so smooth, steady cutting performance is maintained even with dense hair.

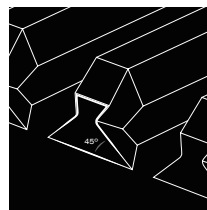
<sup>\*</sup>For ER-HGP90, ER-HGP86, ER-HGP84, ER-GP84-N, ER-HGP74, ER-HGP65 only





## X-TAPER BLADE 2.0\*

The X-taper blade 2.0 boasts exceptional sharpness.  
The result is outstanding cutting ability ready to satisfy the strict demands of professionals.

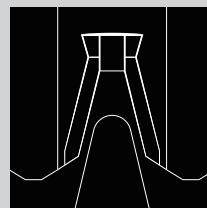


### X-TAPER BLADE 2.0 CAPTURES HAIRS AND PREVENT SLIPPING

Specially designed X-taper blade 2.0 firmly captures and cuts hairs to thoroughly reduce the number of missed hairs. Sharp 45° blade edge provides smooth, clean cutting.

\*For ER-HGP90, ER-HGP84, ER-GP84-N, ER-HGP74, ER-HGP65 only

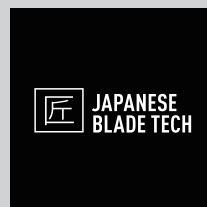
## FUNDAMENTAL BLADE TECHNOLOGY



### DLC COATING 2.0 AND TiN COATING FOR LONG-LASTING SHARPNESS

Thanks to the combination of a Diamond-like Carbon (DLC) Coating 2.0, which is approx. 3.4 times harder\* than conventional coatings, and Titanium Nitride (TiN) Coating, the blade provides twice the durability of stainless steel and a long-lasting sharp edge.

\*Compared with Panasonic model ER1611 (According to Panasonic testing)



### JAPANESE BLADE TECHNOLOGY

Advancing the Japanese art of making exceptionally sharp and robust swords, Panasonic has applied state-of-the-art technology to develop blades of unprecedented quality providing exceptional sharpness, hardness and resistance to wear.



## 360° HANDLING

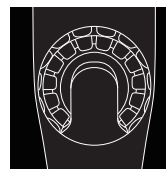
Increased ergonomics and reduced weight, making each movement intuitive and effortless.



### ERGONOMIC DESIGN FOR EASY USE\*

As well as making it slim and lightweight, the focus was on making it easy to hold. The smooth, curving, easy to handle body and features such as the rubber grip to prevent slipping are all designed to satisfy professional needs.

\*For ER-HGP90, ER-HGP86, ER-HGP84, ER-GP84-N, ER-HGP65 only



### QUICK ADJUSTABLE DIAL<sup>\*1</sup> FOR EASY LENGTH SETTING

Turning the dial enables adjustment of cutting length in 0.2 mm steps.\*<sup>2</sup> This eliminates the need for troublesome changing of attachments and enables length adjustment with one hand while working.

\*<sup>1</sup> For ER-HGP90, ER-HGP86, ER-HGP84, ER-GP84-N, ER-HGP74, ER-HGP65 only

\*<sup>2</sup> For ER-HGP90 only. ER-HGP86, ER-HGP84, ER-GP84-N, ER-HGP74, ER-HGP65 are 0.3mm step



## MAX POWER

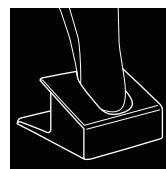
A linear motor drives blade movement, enabling unbroken power throughout each charge.



### LITHIUM-ION BATTERY\*

Features a lightweight, small yet higher capacity lithium-ion battery. There is less capacity loss than a Ni-MH battery due to repeated use.

\*For ER-HGP90, ER-HGP86, ER-HGP84, ER-GP84-N, ER-HGP74, ER-HGP65, ER-GP23, ER-SP20 only



### CONVENIENT CHARGING STAND\*

To recharge, simply place the unit in the compact charging stand. The charging stand is compatible with the ER-HGP90, ER-HGP86, ER-HGP84, ER-GP84-N, ER-HGP74, and ER-HGP65, so it's possible to share one charging stand and save space in the professional work area. During charging, the indicator lights red for quick, easy confirmation.

\*ER-HGP65, ER1411, and ER-RP40 do not include a charging stand.



NEW

## ER-HGP90

LINEAR MOTOR 2.0 MODEL  
WITH CONSTANT CONTROL

150 min use\*1

X-taper blade 2.0

Li-ion battery

2 hrs full charge



- Panasonic's Longest Run Time, 150 min\*1
- Linear motor 2.0 with constant control
- X-taper blade 2.0, Diamond-like Carbon (DLC) Coating 2.0  
Sharp 45° for precise cutting. Coating material of blades is 3.4 times harder.\*2
- Minimum trimming length approx. 0.8 mm
- Titanium Nitride (TiN) Coating fixed blade
- Versatile length setting with 4 comb attachments  
(Compatible with ER-HGP86, ER-HGP84, ER-GP84-N, ER-HGP74, ER-HGP65)  
3/4 mm, 6/9 mm, 12/15 mm, 19/25 mm
- Height adjustment control dial  
(Adjustable from 0.8 to 2.0 mm in seven 0.2 mm steps, without the comb attachment)
- Battery capacity lamp / 3 steps charge status lamp
- Convenient charging stand  
(Compatible with ER-HGP86, ER-HGP84, ER-GP84-N, ER-HGP74)
- Comb attachment shelves
- Lithium-ion battery
- Cord / Cordless operation
- Easy to handle ergonomic design

NEW

## ER-HGP65

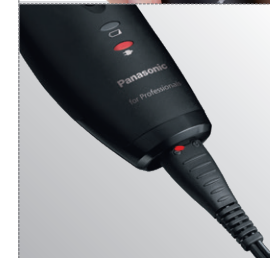
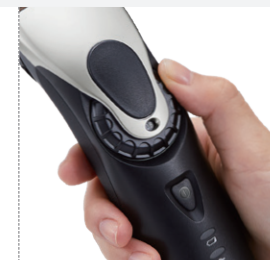
LINEAR MOTOR MODEL  
WITH CONSTANT CONTROL

X-taper blade 2.0

Li-ion battery

1 hr full charge

50 min use\*1



- X-taper blade 2.0, Diamond-like Carbon (DLC) Coating 2.0  
Sharp 45° for precise cutting. Coating material of blades is 3.4 times harder.\*2
- Linear motor with constant control
- Minimum trimming length approx. 0.8 mm
- Titanium Nitride (TiN) Coating fixed blade
- Versatile length setting with 3 comb attachments  
(Compatible with ER-HGP90, ER-HGP86, ER-HGP84, ER-GP84-N, ER-HGP74)  
3/4 mm, 6/9 mm, 12/15 mm
- Height adjustment control dial  
(Adjustable from 0.8 to 2.0 mm in five 0.3 mm steps, without the comb attachment)
- Charge status lamp
- Lithium-ion battery
- Cord / Cordless operation
- Easy to handle ergonomic design

\*1 Based on dry using at 20-30°C

\*2 Compared with Panasonic model ER1611 (According to Panasonic testing)

## ER-HGP86

LINEAR MOTOR MODEL WITH CONSTANT CONTROL

Precision fading blade

Li-ion battery

1 hr full charge

50 min use\*1

- Precision fading blade, Diamond-like Carbon (DLC) Coating 2.0 Sharp 45° for precise cutting. Coating material of blades is 3.4 times harder.\*2
- Minimum trimming length approx. 0.3 mm
- Titanium Nitride (TiN) Coating fixed blade
- Linear motor with constant control
- Versatile length setting with 4 comb attachments (Compatible with ER-HGP90, ER-HGP84, ER-GP84-N, ER-HGP74, ER-HGP65) Fading attachment\*3 (1.5-2.7 mm/0.3 mm pitch), 3/4 mm, 6/9 mm, 12/15 mm
- Height adjustment control dial (Adjustable from 0.3 to 1.5 mm in five 0.3 mm steps, without the comb attachment)
- Charge status lamp
- Convenient charging stand (Compatible with ER-HGP90, ER-HGP84, ER-GP84-N, ER-HGP74)
- Comb attachment shelves
- Lithium-ion battery
- Cord / Cordless operation
- Easy to handle ergonomic design



## ER-HGP74

LINEAR MOTOR MODEL WITH CONSTANT CONTROL

X-taper blade 2.0

Li-ion battery

1 hr full charge

50 min use\*1

- X-taper blade 2.0, Diamond-like Carbon (DLC) Coating 2.0 Sharp 45° for precise cutting. Coating material of blades is 3.4 times harder.\*2
- Minimum trimming length approx. 0.8 mm
- Titanium Nitride (TiN) Coating fixed blade
- Linear motor with constant control
- 6 cutting lengths with 3 comb attachments (Compatible with ER-HGP90, ER-HGP86, ER-HGP84, ER-GP84-N, ER-HGP65) 3/4 mm, 6/9 mm, 12/15 mm
- Height adjustment control dial (Adjustable from 0.8 to 2.0 mm in five 0.3 mm steps, without the comb attachment)
- Charge status lamp
- Convenient charging stand (Compatible with ER-HGP90, ER-HGP86, ER-HGP84, ER-GP84-N)
- Comb attachment shelves • Lithium-ion battery
- Cord / Cordless operation
- Easy to handle design



## ER-HGP84

LINEAR MOTOR MODEL WITH CONSTANT CONTROL

X-taper blade 2.0

Li-ion battery

1 hr full charge

50 min use\*1

- X-taper blade 2.0, Diamond-like Carbon (DLC) Coating 2.0 Sharp 45° for precise cutting. Coating material of blades is 3.4 times harder.\*2
- Minimum trimming length approx. 0.8 mm
- Titanium Nitride (TiN) Coating fixed blade
- Linear motor with constant control
- 8 cutting lengths with 4 comb attachments (Compatible with ER-HGP90, ER-HGP86, ER-HGP74, ER-HGP65) 3/4 mm, 6/9 mm, 12/15 mm, 19/25 mm
- Height adjustment control dial (Adjustable from 0.8 to 2.0 mm in five 0.3 mm steps, without the comb attachment)
- Charge status lamp
- Convenient charging stand (Compatible with ER-HGP90, ER-HGP86, ER-HGP74)
- Comb attachment shelves
- Lithium-ion battery
- Cord / Cordless operation
- Easy to handle ergonomic design



GOLD EDITION  
ER-GP84-N



## ER1512

PROFESSIONAL HAIR CLIPPER

X-taper blade

1 hr full charge

70 min use\*1

- X-taper blade, Diamond-like Carbon (DLC) Coating
- Minimum trimming length approx. 0.8 mm
- 6 cutting lengths comb attachments 3 mm, 4 mm, 6 mm, 9 mm, 12 mm, 15 mm
- Height adjustment control dial (Adjustable from 0.8 to 2.0 mm in five 0.3 mm steps, without the comb attachment)
- Battery capacity lamp / 3 steps charge status lamp
- Convenient charging stand • Comb attachment shelves
- Ni-MH battery • Cord / Cordless operation
- Lightweight, easy to handle design

## ER1421

PROFESSIONAL HAIR CLIPPER

1 hr full charge

80 min use\*1

- Sharp 45° blade for precise cutting
- Diamond-like Carbon (DLC) Coating 2.0
- Titanium Nitride (TiN) Coating fixed blade
- Minimum trimming length approx. 0.8 mm
- 6 cutting lengths with 3 comb attachments 3/6 mm, 9/12 mm, 15/18 mm
- Charge status lamp
- Convenient charging stand
- Comb attachment shelves
- Ni-MH battery
- Cord / Cordless operation
- Easy to handle design

## ER1411

PROFESSIONAL HAIR CLIPPER

1 hr full charge

80 min use\*1

- Sharp 45° blade for precise cutting
- Minimum trimming length approx. 0.8 mm
- 6 cutting lengths with 3 comb attachments 3/6 mm, 9/12 mm, 15/18 mm
- Charge status lamp
- Ni-MH battery
- Cord / Cordless operation
- Easy to handle design



ER1421

ER1411

\*1 Based on dry using at 20-30°C

\*2 Compared with Panasonic model ER1611 (According to Panasonic testing)

\*3 Fading attachment (1.5-2.7 mm) cannot be used with other hair clippers.



NEW

## ER-GP23

PROFESSIONAL HAIR TRIMMER

1 hr full charge

100 min use\*1

- Noise reduction design  
Approx. 30% quieter comparison with Panasonic model ER-GP21
- Power control engine  
Maintaining rotary motor speed regardless of remaining charge
- Minimum trimming length  
Approx. 0.3 mm
- 2 comb attachments 3 mm, 6 mm
- Battery capacity lamp / 3 steps charge status lamp
- Convenient charging stand
- Lithium-ion battery
- Cord / Cordless operation
- Straight handle design
- Compact & lightweight (144 x 32 mm / 110 g)

## ER-GP21

PROFESSIONAL HAIR TRIMMER

8 hrs full charge

40 min use\*1

- Minimum trimming length  
Approx. 0.3 mm
- 2 comb attachments 3 mm, 6 mm
- LED charging indicator
- Convenient charging stand
- Comb attachment shelves
- Ni-MH battery
- Easy to handle design
- Compact & lightweight (148 x 32 mm / 115 g)
- Reduced, more comfortable vibration

## ER-SP20

LINEAR MOTOR MODEL PROFESSIONAL SHAVER

3 stainless steel blade shaving system

Li-ion battery

1 hr full charge

70 min use\*1

- 3 stainless steel blade shaving system
- Multi-fit arc blade fits against the skin for a close shave
- 30° nano polished blades
- Linear motor
- Battery capacity lamp / 3 steps charge status lamp
- Convenient charging stand
- Lithium-ion battery
- Cord / Cordless operation
- Compact & lightweight (129 x 64 mm / 145 g)
- Washable for easy maintenance



## ER-RP40

PROFESSIONAL FACIAL HAIR TRIMMER

Skin protective blade

Flexible swing head

Multi-use

Easy to shape eyebrows

180 min use\*2

- Rounded blade edges for protecting the skin
- Close shave of approx. 0.12 mm without attachment\*3
- Flexible swing head fits facial contours (10° to the left and right)
- eyebrow comb A(5/6/7 mm), B(2/3/4 mm) and Detail attachment
- Swing lock attachment can fix the head
- Washable for easy maintenance
- Operated by a single AA / LR6 alkaline battery (not included)

\*1 Based on dry using at 20-30°C \*2 Based on dry using at 20°C (Using a single Panasonic LR6 [AA Alkaline Battery]) \*3 Fixed blade thickness.

## Specification

BLADE	Moving Blade's Shape & Edge Angle	X-taper 2.0 / 45°	Precision fading / 45°	X-taper 2.0 / 45°	
	Blade Material	Stainless steel			
	Treatment	Diamond-like Carbon (DLC) Coating 2.0 (Moving blade) Titanium Nitride (TiN) Coating (Fixed blade)			
MOTOR		Linear motor 2.0 with constant control	Linear motor with constant control		
COMB ATTACHMENT		8-Stage*1 (3/4 mm, 6/9 mm, 12/15 mm, 19/25 mm)	11-Stage*1 Fading (1.5-2.7 mm)*2, 3/4 mm, 6/9 mm, 12/15 mm	8-Stage*1 (3/4 mm, 6/9 mm, 12/15 mm, 19/25 mm)	6-Stage*1 (3/4 mm, 6/9 mm, 12/15 mm)
MINIMUM TRIMMING LENGTH		Approx. 0.8 mm	Approx. 0.3 mm	Approx. 0.8 mm	
CUTTING LENGTH ADJUSTMENT		0.8-2.0 mm 0.2 mm pitch	0.3-1.5 mm 0.3 mm pitch	0.8-2.0 mm 0.3 mm pitch	
INDICATOR		Battery capacity lamp 3 steps charge status lamp	Recharge lamp Charge status lamp		
CHARGING STAND		✓ *1	✓ *1		-
ACCESSORIES		Oil, Cleaning brush, Cloth pouch, Comb attachment shelves			Oil, Cleaning brush
REPLACEMENT BLADE (Standard blade)		WER9920Y	WER9930Y*3	WER9920Y	
CHARGING TIME		Approx. 2 hour	Approx. 1 hour		
OPERATING TIME		Approx. 150 min*4	Approx. 50 min*4		
BATTERY TYPE		Li-ion			
POWER SOURCE		AC / RC 100-240 V			
PRODUCT DIMENSIONS H × W × D (mm)		Approx. 178 × 48 × 48	Approx. 176 × 48 × 47		Approx. 176 × 48 × 48
BODY WEIGHT		Approx. 255 g	Approx. 245 g		Approx. 250 g

## Specification

BLADE	Moving Blade's Edge Angle	X-taper / 45°	45°	77°	30°	60°
	Blade Material	Stainless steel				
	Treatment	Diamond-like Carbon (DLC) Coating (Moving blade) Titanium Nitride (TiN) Coating (Fixed blade)	Diamond-like Carbon (DLC) Coating 2.0*5 (Moving blade) Titanium Nitride (TiN) Coating*5 (Fixed blade)	-	-	-
MOTOR		Rotary motor			Linear motor	Rotary motor
COMB ATTACHMENT		6-Stage (3 mm, 4 mm, 6 mm, 9 mm, 12 mm, 15 mm)	6-Stage (3/6 mm, 9/12 mm, 15/18 mm)	3 mm, 6 mm	-	6-Stage (5/6/7 mm, 2/3/4 mm)
MINIMUM TRIMMING LENGTH		Approx. 0.8 mm		Approx. 0.3 mm	Approx. 0.063 mm*6	Approx. 0.12 mm*6
CUTTING LENGTH ADJUSTMENT		0.8-2.0 mm 0.3 mm pitch	-	-	-	-
INDICATOR		Battery capacity lamp 3 steps charge status lamp	Charge status lamp	Battery capacity lamp 3 steps charge status lamp } (ER-GP23) Charge indicator (ER-GP21)	Battery capacity lamp 3 steps charge status lamp	-
CHARGING STAND		✓	✓ (ER-1421-S only)		✓	-
ACCESSORIES		Oil, Cleaning brush, Comb attachment shelves	Oil, Cleaning brush, Comb attachment shelves (ER-1421 only)	Oil, Cleaning brush, Comb attachment shelves (ER-GP21 only)	Oil, Cleaning brush, Protective cap	Cleaning brush, Detail attachment, Swing lock attachment
REPLACEMENT BLADE (Standard blade)		WER9902Y	WER9714Y (ER1421) WER9713Y (ER1411)	WER9352Y	WER9013Y	WES9280Y
CHARGING TIME		Approx. 1 hour		Approx. 1 hour (ER-GP23) Approx. 8 hour (ER-GP21)	Approx. 1 hour	-
OPERATING TIME		Approx. 70 min*4	Approx. 80 min*4	Approx. 144x32x35 (ER-GP23) Approx. 148x32x35 (ER-GP21) Approx. 40 min (ER-GP21)*4	Approx. 70 min*4	Approx. 180 min*7
BATTERY TYPE		Ni-MH		Li-ion (ER-GP23) Ni-MH (ER-GP21)	Li-ion	AA
POWER SOURCE		AC / RC 100-240 V		AC / RC 100-240 V (ER-GP23) RC 230 V (ER-GP21)	AC / RC 100-240 V	AA Battery*8
PRODUCT DIMENSIONS H x W x D (mm)		Approx. 178 x 45 x 41	Approx. 168 x 45 x 44	Approx. 144x32x35 (ER-GP23) Approx. 148x32x35 (ER-GP21)	Approx. 129 x 64 x 39	Approx. 166 x 26 x 28
BODY WEIGHT		Approx. 230 g	Approx. 150 g	Approx. 110 g (ER-GP23) Approx. 115 g (ER-GP21)	Approx. 145 g	Approx. 55 g (w/o 1 AA Battery)

\*1 Compatible with ER-HGP90-K, ER-HGP86-K, ER-HGP84-K, ER-GP84-N and ER-HGP74-K \*2 0.3 mm pitch. \*3 Not compatible with other professional hair clippers. \*4 Based on dry using at 20-30°C \*5 ER-1421-S only. \*6 Fixed blade thickness. \*7 Based on dry using at 20°C (Using a single Panasonic LR6 [AA Alkaline Battery]) \*8 LR6 (AA Alkaline Battery) is not included.

